

MRICU SPEACS: Implementation of an Evidence-Based Communication Program

Julie Rogan, DNP, CNS, ACCNS-AG
Temple University Hospital
8/18/2023
@JulieRoganCNS



Disclosures

- Nothing to disclose



Clinical Setting

- Medical Respiratory Intensive Care Unit at Temple University Hospital
- Two teaching service teams and one APP team
- 32 beds
- 90 clinical nurses



 **TEMPLE HEALTH**

Problem

Patients who are mechanically ventilated are unable to communicate.

 **TEMPLE HEALTH**

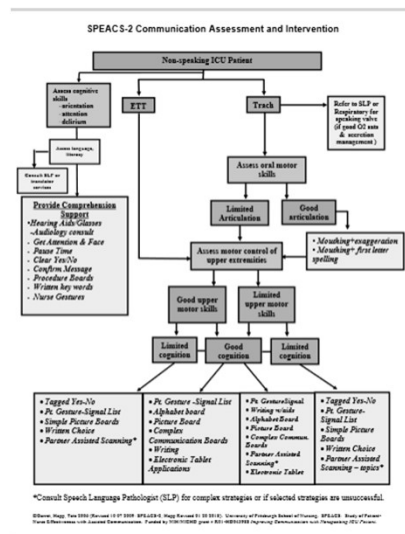
Evidence to support practice change

- Study of Patient-Nurse Effectiveness with Assisted Communication Strategies – 2 (SPEACS-2), developed by Happ et al. (2014)



Components of SPEACS-2

- Decision Pathway
- One-hour online education module for RNs
- Alphabet boards
- Picture boards
- Tagged Yes/No
- Dry erase boards
- Clip boards
- Felt-tip pens
- Hearing aid batteries



Communication Boards

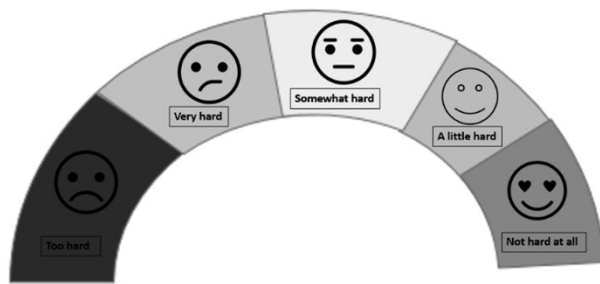
<https://www.patientprovidercommunication.org/>

The screenshot shows the website header with social media icons and the title "Patient-Provider Communication". Below the header is a navigation bar with "Communication Tools and Materials". A disclaimer states: "These resources are provided for information purposes only. They do not constitute an endorsement or recommendation by the Patient-Provider Communication Network. We bear no responsibility for the accuracy, legality, or content of these resources. Please contact external link sources for answers to question regarding content." Below the disclaimer are eight categories of resources: "Advanced Directives and DNR", "Alphabet Boards", "Appointments", "Bed Side Signage", "COVID-19 - FREE Bilingual Tools", "COVID-19 - FREE English Tools", "Daily Care", and "Dysphagia Icon Images".



Ease of Communication Scale

- 10-item measure of difficulty communicating
- 5-point Likert scale from 0 (not hard at all) to 4 (too hard)
- Answers entered directly into REDCap data collection tool on smart phone



PICO Question

- In adult ICU patients who are mechanically ventilated, how does SPEACS-2 communication training program affect ease of communication score (ECS)?



Patient Inclusion Criteria

- Mechanical ventilation with endotracheal tube or tracheostomy tube
- Physically located in patient room in medical-respiratory intensive care unit
- Richmond Agitation-Sedation Scale (RASS) score -2 to +2



Implementation Plan

June-August 2022

- IRB Approval: Project proposal did not meet definition of Human Subjects Research, exempt
- Collaboration with Speech Language Pathology
- Connect with IT to get tools placed on intranet

September 2022

- Measure ECS in intubated patients in MRICU before implementation of SPEACS



Implementation Plan

October-November 2022

- Distribute SPEACS-2 education module from OSU to RNs via email and QR code
- Communicate with MRICU clinical nurses by rounding frequently to promote use of SPEACS
- Encourage use
- Identify barriers to implementation

December 2022

- Measure ECS in intubated patients in MRICU after implementation of SPEACS



Results

Pre-Intervention

- September 2022
- 10 patients in MRICU RASS -2 to +2
- Ease of Communication Scale score
 - Range: 20-37
 - Median: 30.5
 - Mean: 27.9
 - SD: 5.78

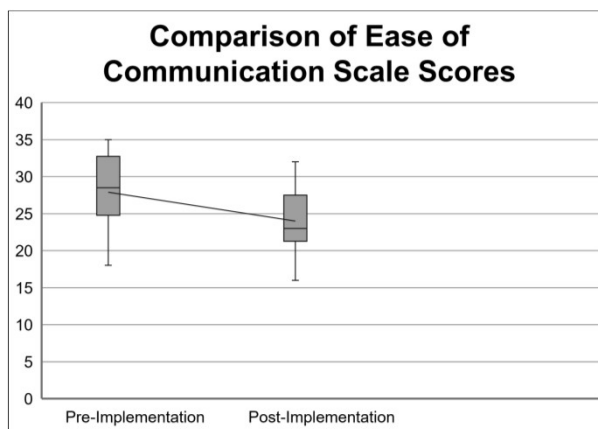
Post-Intervention

- December 2022
- 10 patients in MRICU RASS -2 to +2
- Ease of Communication Scale score
 - Range: 16-32
 - Median: 23
 - Mean: 24
 - SD: 4.99



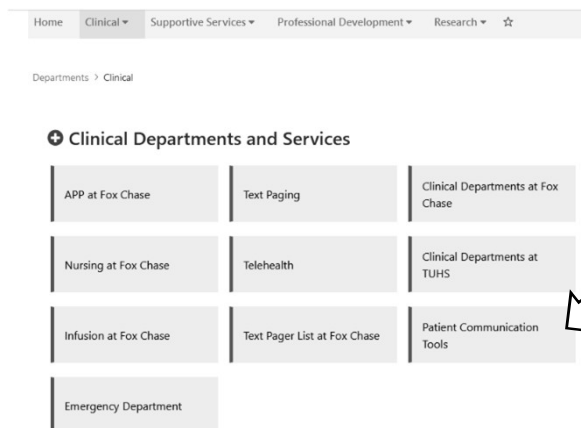
Results: Significance

- Independent samples t-test
- $p = 0.587$
- Improvement is not statistically significant



Strengths

- Patients see value in project
- Clinical nurses and nursing leadership see value in project
- Interprofessional collaboration with speech language pathology
- Tools are now easy to access on health system intranet



Barriers to Implementation

- Distracted by contract negotiations (potential nursing strike)
- Delayed process of getting materials posted on intranet
- Cumbersome to set up account on OSU site for CEU
- Competing priorities (CAUTI, CLABSI, HAPI)



Next Steps

- Collaborate with patients who have been intubated to design unit-specific guidance (post-COVID, COPD, etc)
- Work with Patient Experience Office for branding on dry erase boards, markers, pens to provide patients and their loved ones (about \$6 per board without branding)
- Obtain permissions to place SPEACS on TUHS online learning
- Roll out program to floors that receive mechanically ventilated trached patients (6th floor) and other ICUs at TUH



References

- Berning, J.N., Poor, A.D., Buckley, S.M., Patel, K.R., Lederer, D.J., Goldstein, N.E., Brodie, D., & Baldwin, M.R. (2016). A novel picture guide to improve spiritual care and reduce anxiety in mechanically ventilated adults in the intensive care unit. *Annals of the American Thoracic Society* 2016 Aug;13(8):1333-42. doi: 10.1513/AnnalsATS.201512-831OC.
- Broyles, L.M., Tate, J.A., & Happ, M.B. (2012). Use of augmentative and alternative communication strategies by family members in the intensive care unit. *American Journal of Critical Care*, 21(2);e21-32. doi: 10.4037/ajcc2012752.
- Dithole, K. S., Thupayagale-Tshweneagae, G., Akpor, O. A., & Moleki, M. M. (2017). skills intervention: promoting effective communication between nurses and mechanically ventilated patients. *BMC Nursing*, 16, 1–6. <https://doi.org/10.1186/s12912-017-0268-5>
- Happ, M.B. (2021). Giving Voice: Nurse-Patient Communication in the Intensive Care Unit. *American Journal of Critical Care*, 30(4);256-265. doi: 10.4037/ajcc2021666.
- Happ, M. B., Garrett, K.L., Tate, J.A., DiVirgilio, D., Houze, M.P., Demirci, J.R., George, E., & Sereika, S. M. (2014). Effect of a multi-level intervention on nurse-patient communication in the intensive care unit: results of the SPEACS trial. *Heart & Lung*, 43(2);89-98. doi: 10.1016/j.hrtlng.2013.11.010.
- Happ, M. B., Seaman, J.B., Nilsen, M.L., Sciuili, A., Tate, J.A., Saul, M., & Barnato, A. E. (2015). The number of mechanically ventilated ICU patients meeting communication criteria. *Heart & Lung*, 44(1);45-9. doi: 10.1016/j.hrtlng.2014.08.010.
- Happ, M. B., Sereika, S. M., Houze, M. P., Seaman, J. B., Tate, J. A., Nilsen, M. L., van Panhuis, J., Sciuili, A., Paull, B., George, E., Angus, D. C., & Barnato, A. E. (2015). Quality of care and resource use among mechanically ventilated patients before and after an intervention to assist nurse-novocal patient communication. *Heart & Lung*, 44(5), 408–415. e2. <https://doi.org/10.1016/j.hrtlng.2015.07.001>
- Holm, A., & Dreyer, P. (2018). Nurse-patient communication within the context of non-sedated mechanical ventilation: A hermeneutic-phenomenological study. *Nursing in Critical Care*, 23(2), 88–94. <https://doi.org/10.1111/nicc.12297>



References

- Holm, A., & Dreyer, P. (2018). Use of communication tools for mechanically ventilated patients in the intensive care unit. *Computer and Informatics Nursing*, 36(8):398-405. doi: 10.1097/CIN.0000000000000449.
- Jssennagger, C. E., Ten Hoon, S., Van Wijk, A., Van den Broek, J. M., Girbes, A.R., & Tuinman, P. R. (2018). Caregivers' perceptions towards communication with mechanically ventilated patients: The results of a multicenter survey. *Journal of Critical Care*, 46:263-268. doi: 10.1016/j.jcrc.2018.08.036.
- Momennasab, M., Ardakani, M. S., Rad, F. D., Dokoochaki, R., Dakhesh, R., & Jaberli, A. (2019). Quality of Nurses' Communication with Mechanically Ventilated Patients in a Cardiac Surgery Intensive Care Unit. *Investigacion & Educacion En Enfermeria*, 37(2), 1-12. <https://doi.org/10.17533/udea.iee.v37n2e02>
- Nilsen, M. L., Sereika, S. M., Hoffman, L. A., Barnato, A., Donovan, H., & Happ, M. B. (2014). Nurse and Patient Interaction Behaviors' Effects on Nursing Care Quality for Mechanically Ventilated Older Adults in the ICU. *Research in Gerontological Nursing*, 7(3), 113-125. <https://doi.org/10.3928/19404921-20140127-02>
- Rodriguez, C. S., Rowe, M., Thomas, L., Shuster, J., Koepfel, B., & Cairns, P. (2016). Enhancing the Communication of Suddenly Speechless Critical Care Patients. *American Journal of Critical Care: an official publication, American Association of Critical-Care Nurses*, 25(3), e40-e47. <https://doi.org/10.4037/ajcc2016217>
- Tate, J. A., Newtz, C., Ali, A., & Happ, M. B. (2020). Advancing patient-centered communication content for prelicensure nursing students using StudentSPEACS: a mixed-methods study. *Nurse Education*, 45(4):E36-E40. doi: 10.1097/NNE.0000000000000785.
- The Joint Commission (2010). Advancing Effective Communication, Cultural Competence, and Patient- and Family-Centered Care: A Roadmap for Hospitals. Oakbrook Terrace, IL: The Joint Commission. <https://www.jointcommission.org/-/media/jc/documents/resources/patient-safety-topics/health-equity/aroundmapforhospitalsfinalversion727.pdf?db=web&hash=AC3AC4BED1D973713C2CA6B2E5ACD01B&hash=AC3AC4BED1D973713C2CA6B2E5ACD01B>
- Trotta, R. L., Hermann, R. M., Polomano, R. C., & Happ, M. B. (2020). Improving Nonvocal Critical Care Patients' Ease of Communication Using a Modified SPEACS-2 Program. *Journal for Healthcare Quality: Promoting Excellence in Healthcare*, 42(1), e1-e9. <https://doi.org/10.1097/JHQ.0000000000000163>



800-TEMPLE-MED | TempleHealth.org

Julie.Rogan@tuhs.temple.edu
@JulieRoganCNS

Follow @TempleHealth @TempleHSLibs @TempleCPH on social media

